



**30 YEARS OF  
SELF-INSURANCE SUCCESS**

**1996 - 2026**

**SEPTEMBER 23-25, 2026  
THE LODGE AT GULF STATE PARK  
GULF SHORES, AL**

**CONFERENCE PROSPECTUS • SPONSOR INFORMATION  
REGISTRATION PACKET**

# masi

MISSISSIPPI ASSOCIATION OF SELF-INSURERS

**8 Hours of Totally Rad Continuing Education**

**\$1,500 Grand Prize at the Throwback Drawdown Party! A Prize Worth Rewinding For!**

**Sunrise Devotions on the Gulf Coast**

**"This is how we toss it." Cornhole Tournament**

**Breakout Sessions – Workers' Compensation Track and Health Benefits Track**

**Cash Prizes Every Day. Exhibitor Door Prizes. Don't Miss Your Chance to Win!**

Join MASI members and industry leaders as we celebrate 30 years of self-insurance success – 90s style. Set against the beautiful Alabama Coast, this year's conference combines education, networking, and a touch of nostalgia and fun for a milestone event you won't want to miss.

We're celebrating the decade when MASI was founded and honoring 30 years of success in Mississippi's self-insurance industry. The conference features insightful education, valuable networking, and plenty of throwback fun as we reflect on where we started and look ahead to our future. This is one conference you will not want to miss, even if your dial-up modem is still buffering!

## Who Should Attend?

Employers, HR and risk professionals, claims and safety personnel, healthcare providers, attorneys, TPAs, and anyone involved in self-funded workers' compensation or health plans.

Visit [www.masiweb.org](http://www.masiweb.org) for agenda details – coming soon!

## Dress Code

Resort casual attire is appropriate throughout the conference.

## Event Cancellation Policy

To adequately prepare for a successful event, please review and understand that cancellations made 30 days or more in advance of the event date will receive a 100% refund. Cancellations made within 14 and 29 days in advance of the event date will incur a 50% fee. Cancellations made within 13 days of the event will not receive a refund.

## Special Needs and Accommodations

If you require special needs or accommodations, including food allergies, please contact MASI Executive Director Wendy Powell at 601-749-6274 or [wendyp@masiweb.org](mailto:wendyp@masiweb.org) so that plans can be made accordingly.



# Press Play: Attendee and Exhibitor Registration

Ready to join us?  
Here's everything you need to secure your spot.

## Choose Your Pass: Registration & Pricing

Your conference pass includes access to eight hours of continuing education, along with all sessions and networking events. Lock in your pass and join us for a full lineup of learning, connection, and fun.

	Early Bird Fee Deadline: August 26, 2026	Regular Fee After: August 26, 2026	On-Site
Member	\$350	\$375	\$400
Additional Company Attendee	\$250	\$275	\$300
Spouse/Guest	\$150	\$175	\$200
Non-Member	\$500	\$525	\$550
Additional Company Attendee	\$400	\$425	\$450
Spouse/Guest	\$200	\$225	\$250

## Hotel Information

The Lodge at Gulf State Park  
21196 E. Beach Blvd.  
Gulfshores, AL 36542  
251-540-4000

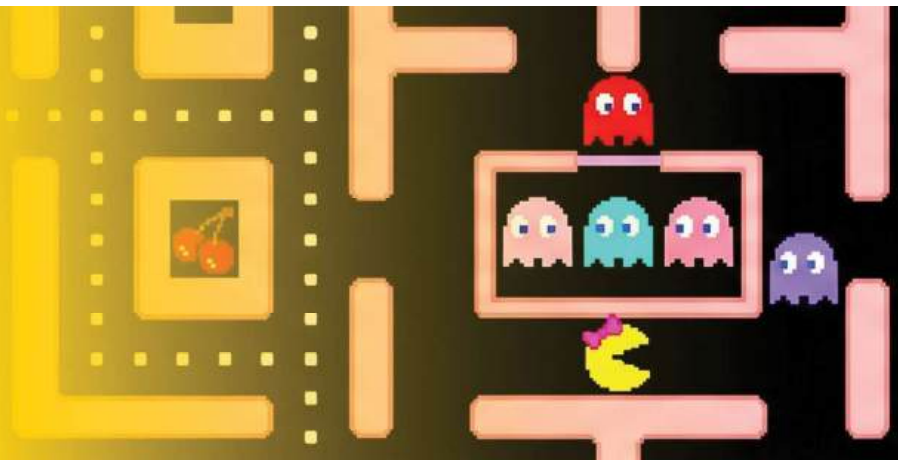
Reservations:  
**Call:** 800-618-4350  
**Online:** <https://group.hilton.com/ev9mv1>  
**Group code:** 948

*Only contracted room nights (Tuesday, Wednesday and Thursday night) will be available to book through the link, all pre- and post-night room requests will be call in only. All reservations must be guaranteed with a major credit card. Individual guests are required to cancel or revise their reservations five days prior to arrival to avoid one night's room and tax penalty.*

*Any special requests regarding sleeping rooms are based on availability at the time of arrival. Hotel reservations must be made by August 26, 2026, to receive the MASI Conference rate. Any reservation made after this time will be priced at the prevailing hotel rates. The Lodge at Gulf State Park resort will make every effort to accommodate specific room requests, such as early check-in, based upon availability. Luggage storage is available for early arrival and late departure.*

Looking to connect with attendees and showcase your organization?

## Welcome to the Networking Arcade!



Inspired by classic 90s arcades, our exhibit hall will serve as the central hub for connection, giving exhibitors prime visibility with attendees throughout the conference.

Exhibitors are encouraged (but not required) to incorporate 90s-themed elements into their booths. Participation in the **Neon Nostalgia Booth Contest** adds to the fun, with the winner receiving a complimentary booth at MASI's 2027 conference. Dust off the neon colors, rewind those cassette tapes, and bring your best 90s creativity to the Networking Arcade!

### The Networking Arcade Exhibitor Fees



	Early Bird Fee Deadline: August 26, 2026	Regular Fee After: August 26, 2026	On-Site
Member	\$1000	\$1100	\$1200
Additional Company Attendee	\$250	\$300	\$350
Spouse/Guest	\$150	\$175	\$200
Non-Member	\$1400	\$1500	\$1600
Additional Company Attendee	\$400	\$450	\$500
Spouse/Guest	\$200	\$225	\$250

### Booth Specifics

The exhibit fee includes two complimentary registrations, signage, reception tickets, lunch, general sessions, and access to the Drawdown Party. Each exhibitor will have a curtained 8' x 8' space with a six-foot covered table and two chairs.

Booth assignments are based on sponsorship level and the date MASI receives the application and payment. While we strive to accommodate preferences, MASI reserves the right to adjust booth locations for an optimal event experience. For shipping details, please contact MASI.

Note: Sponsorship packages that include a reduced exhibit booth fee still receive a maximum of two complimentary registrations.

### Set Up and Take Down

Your booth can be set up on Wednesday, September 23, between 1 – 5 p.m. or on Thursday, September 24, prior to 7:15 a.m. Exhibit takedown will occur Friday, September 25, between 8:30 – 9:15 a.m., but please not before!

# Take the Stage: Sponsorship Opportunities

## WANT TO TAKE YOUR VISIBILITY EVEN FURTHER?

Sponsorships play an important role in making the MASI Fall Conference a success. Your support helps fund the conference's educational programs, networking opportunities, and special events while allowing MASI to keep registration rates affordable for self-insured employers and industry professionals.

Think of our sponsorship levels as the greatest hits of the conference, each offering unique opportunities to showcase your organization and connect with attendees.

LEVEL	BENEFITS	PRICING
 <p><b>HEADLINER SPONSOR</b></p>	<p><i>Take center stage at MASI's 30th Anniversary celebration.</i></p> <p><b>Headliner Sponsors</b> receive top billing throughout the conference, with premier visibility and recognition as a leading supporter of MASI and Mississippi's self-insurance community.</p> <ul style="list-style-type: none"> <li>• Name on signage, materials, website</li> <li>• Two complimentary registrations</li> <li>• Half-price booth</li> <li>• Preferred placement in main traffic corridor</li> <li>• Premium recognition – podium, email, social media</li> <li>• Full page ad in conference program</li> </ul> <p><i>Maximum of two complimentary registrations when combined with half-priced booth in the exhibit hall.</i></p>	<p><b>\$2500</b></p>
 <p><b>MIXTAPE SPONSOR</b></p>	<p><i>Keep the momentum going with a sponsorship that hits all the right notes.</i></p> <p><b>Mixtape Sponsors</b> receive strong visibility and recognition throughout the conference, helping power the experience while connecting with MASI members and industry leaders in meaningful ways. With a blend of exposure and engagement, this level offers a well-rounded opportunity to showcase your organization.</p> <ul style="list-style-type: none"> <li>• Name on signage, materials, website</li> <li>• One complimentary registration</li> <li>• Recognition – podium, email</li> <li>• One half page ad in conference program</li> </ul>	<p><b>\$2000</b></p>
 <p><b>CHART TOPPER SPONSOR</b></p>	<p><i>A chart-topping sponsorship that keeps the MASI playlist going strong.</i></p> <p><b>Chart Topper Sponsors</b> receive valued recognition and visibility while supporting the educational and networking opportunities that make the MASI conference a success.</p> <ul style="list-style-type: none"> <li>• Name on signage, materials, website</li> <li>• One complimentary registration</li> <li>• Recognition – email</li> <li>• One quarter page ad in conference program</li> </ul>	<p><b>\$1500</b></p>
 <p><b>OPENING ACT SPONSOR</b></p>	<p><i>Start the show strong and make your presence known.</i></p> <p><b>Opening Act Sponsors</b> receive foundational recognition and visibility throughout the conference, supporting MASI's educational and networking efforts while introducing your organization to a targeted audience of self-insured employers and industry professionals.</p> <ul style="list-style-type: none"> <li>• Name on signage, materials, website</li> </ul>	<p><b>\$1000</b></p>

## BONUS TRACKS: EXTRA NETWORKING AND ENGAGEMENT

*Looking for even more ways to engage and be part of the experience?*

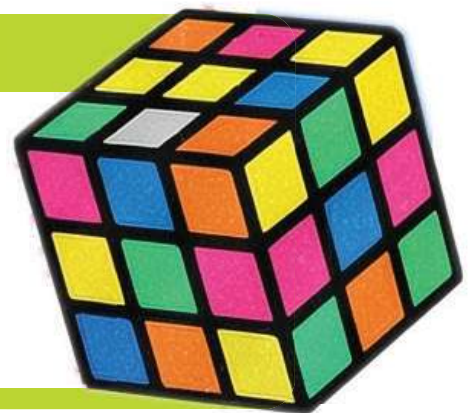
### Conference Program Advertising

MASI is turning 30 in 2026! What better way to celebrate than with a little 90s nostalgia and a lot of appreciation for the partners who have been part of the journey? As part of our 2026 Fall Conference, we are inviting sponsors, members, and industry partners to leave their mark by purchasing an ad in the official conference program. This is your chance to:

- Celebrate MASI's 30-year milestone and share a congratulatory message
- Showcase your organization to highlight your services
- Be seen by conference attendees throughout the event

Whether you have been with MASI since the days of dial-up or just joined the party, we want you to be part of this milestone moment.

	SPECS	PRICING
Full Page	Size: 8 ½ x 11	\$500
Half Page	Sizes: 7.5" W x 4.75" H - Horizontal 3.75" W x 10" H - Vertical	\$150
Quarter Page	Size: 3.75" W x 4.75" H	\$125



## BOOM BOXES, BEAN BAGS, BRAGGING RIGHTS!

Join us for the "This is How We Toss It!" Cornhole Tournament!

Think you have the skills to rule the playground? Grab your partner and get ready to toss like it's 1999 at our 90s-themed cornhole tournament on Thursday, September 24, from 2 – 4 p.m.

#### Cash Prizes:

- 1st Place – \$100 per player
- 2nd Place – \$75 per player

#### Registration:

- \$100 per two-person team
- \$50 solo entry — we'll match you with a teammate!

Whether you're bringing serious skills or just here for nostalgia and networking, this is your chance to compete for prizes and ultimate bragging rights. Come toss like a pro or just chill and watch the action.

Spots are limited to the first 16 teams, so don't wait. You don't want to press pause on this game!

# 2026 CONFERENCE REGISTRATION & PAYMENT FORM

Dust off the flannel, rewind the cassette, and join MASI as we celebrate 30 years of self-insurance success.

Complete this form to reserve your spot and finalize your selections. For multiple registrations, copy this form. Use this form for Spouse/Guest registration as well. Spouse registration includes access to the Welcome Reception and the Drawdown Party.

Check all that apply. I am a(n)

- |                                    |  |
|------------------------------------|--|
| <input type="checkbox"/> Attendee  | <input type="checkbox"/> Sponsor                         |
| <input type="checkbox"/> Exhibitor | <input type="checkbox"/> Conference Program Advertiser   |
| <input type="checkbox"/> Spouse    | <input type="checkbox"/> Cornhole Tournament Participant |

Name: \_\_\_\_\_ Name for Name Badge: \_\_\_\_\_

Company Name: \_\_\_\_\_

Address: \_\_\_\_\_ City: \_\_\_\_\_ State: \_\_\_\_\_ Zip: \_\_\_\_\_

Phone: \_\_\_\_\_

E-Mail: \_\_\_\_\_

CE License Type / Number: \_\_\_\_\_

Complete the following sections where applicable to you/your company.

Sponsorship Level: \_\_\_\_\_

Ad Size (circle or check):  8.5" W x 11" H (Full Page)       7.5" W x 4.75" H (Half Page Horizontal)  
 3.75" W x 10" H (Half Page Vertical)       3.75" W x 4.75" H (Quarter Page)

Cornhole Player 1 Name: \_\_\_\_\_

Cornhole Player 2 Name: \_\_\_\_\_

ITEM	LEVEL/DESCRIPTION	AMOUNT OWED
Attendee		
Exhibit <i>If you are a Headliner Sponsor, reduce your exhibit cost by half.</i>		
Spouse		
Sponsorship		
Conference Program Ad		
Cornhole Player / Team		

Conference Total

Enclosed is my check made payable to MASI in the amount of \$\_\_\_\_\_.

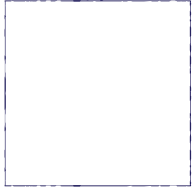
**MASI**  
**825 North President Street**  
**Jackson, Mississippi 39202**

Get ready to rewind, reconnect, and celebrate 30 years of MASI in the 90s.

For more information on **MASI's Back to the 90s: Celebrating 30 Years of Self-Insurance Success 2026 Fall Conference** contact:  
**Wendy Powell**  
**MASI Executive Director**  
**wendyp@masiweb.org**  
**601-749-6274**



Mississippi Association of Self-Insurers  
825 North President Street  
Jackson, MS 39202



**30 YEARS OF  
SELF-INSURANCE SUCCESS**

**1996 - 2026**

SEPTEMBER 23-25, 2026  
THE LODGE AT GULF STATE PARK  
GULF SHORES, AL



**30 YEARS OF  
SELF-INSURANCE SUCCESS**

**1996 - 2026**

SEPTEMBER 23-25, 2026  
THE LODGE AT GULF STATE PARK  
GULF SHORES, AL

CONFERENCE PROSPECTUS • SPONSOR INFORMATION  
REGISTRATION PACKET